

null
BED

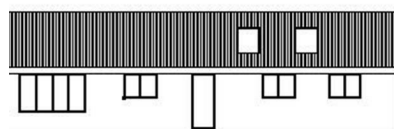
Plot with Full Planning Permission Granted
Land to the Rear of 6 Rustic Road, Rustic Road, Peacehaven, BN10 7CC



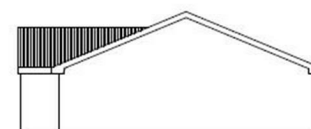
FRONT ELEVATION SIDE ELEVATION



REAR ELEVATION WEST ELEVATION



REAR ELEVATION NORTH ELEVATION



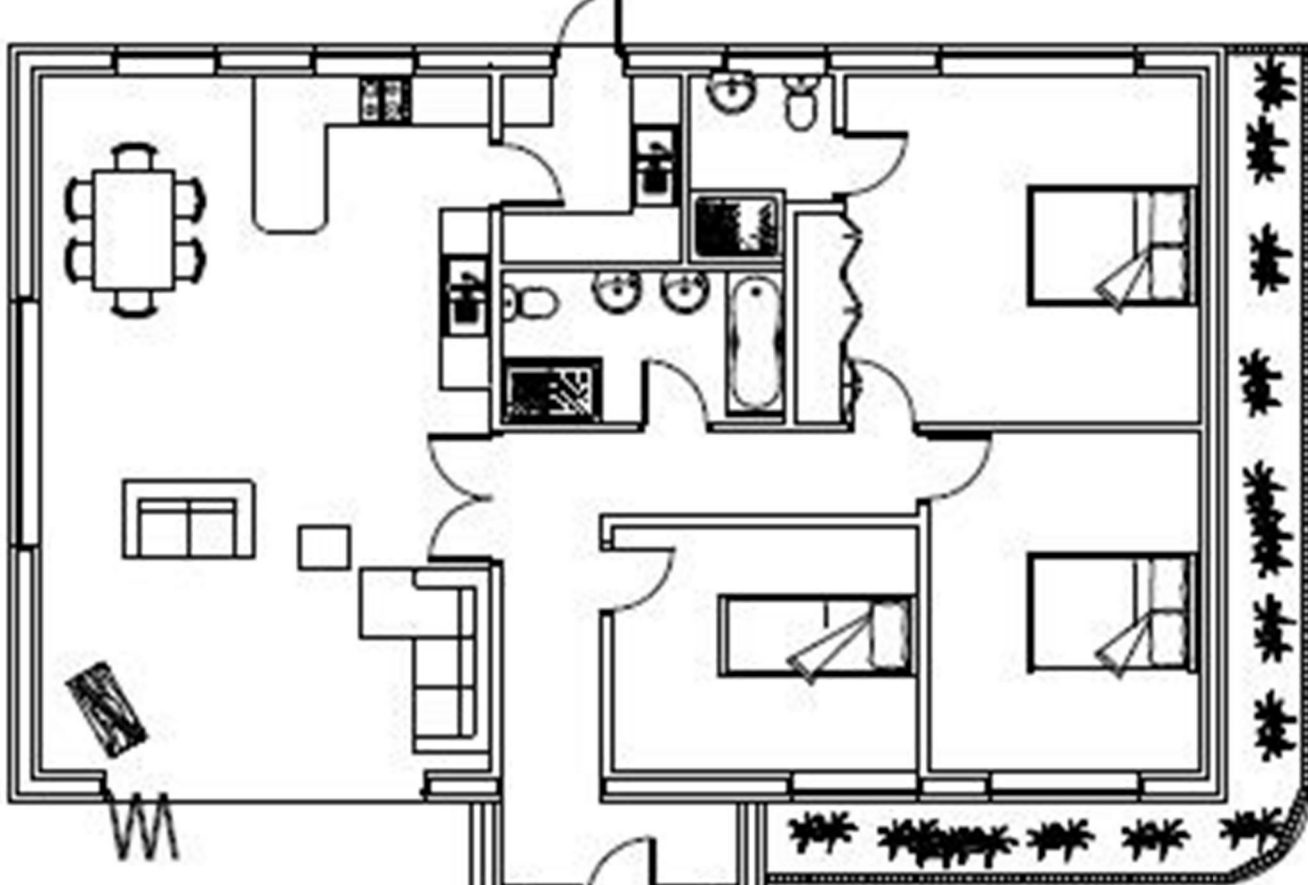
SIDE ELEVATION EAST ELEVATION

Price £195,000

Freehold

phillipmann
we do more

www.phillipmann.com



inbrief...

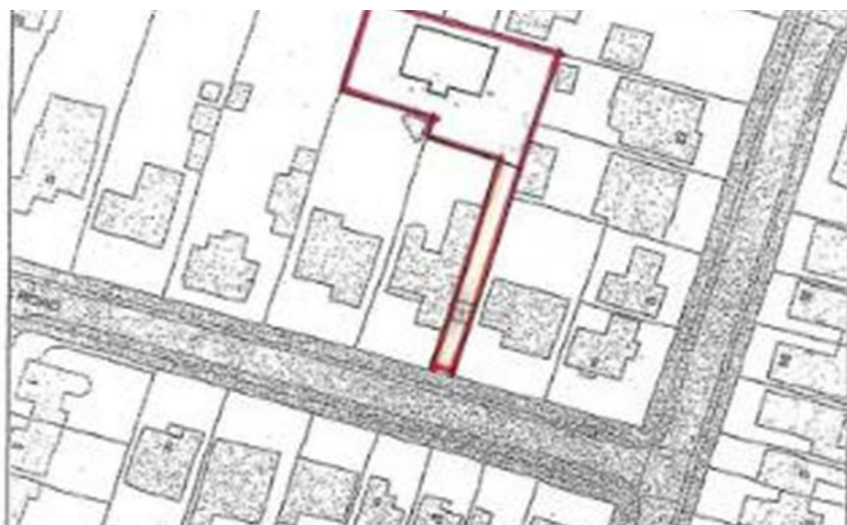
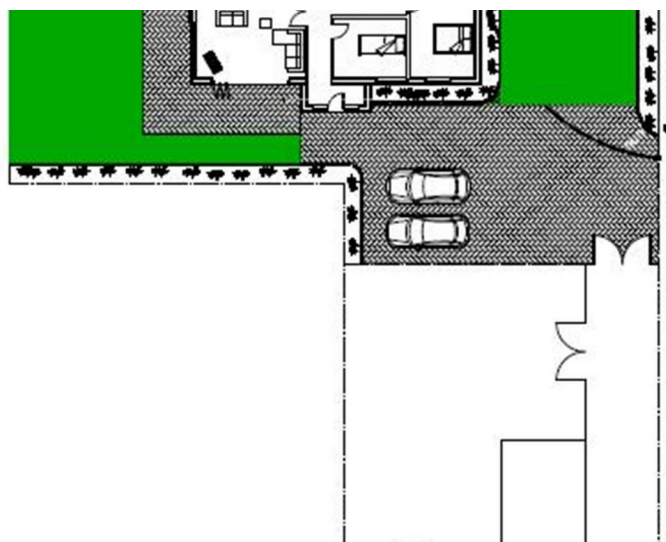
Grab this rare opportunity to purchase this parcel of land which has FULL PLANNING PERMISSION to erect a three bedroom, detached bungalow with parking and garden. The current plans show the property will also have the benefit of a spacious open plan living area which will also incorporate the kitchen. Furthermore, three good size bedrooms are on offer with the master offering an en-suite shower room/wc. Lastly a family bathroom/wc completes the accommodation.

Externally there will be a large sunny westerly aspect rear garden and off road parking.

Location wise the property could not be better positioned, a short walk will take you to a local primary school, local shop and a regular bus service to Brighton on the Telscombe road. Furthermore open fields and countryside walks are also just moments away.

Outline planning permission and associated documents can be viewed on Lewes District Council's Planning website under the reference LW/25/0283

Please call the office to arrange all viewings.



moreinfo...

Phillip Mann Peacehaven Office
226-230 South Coast Road, Peacehaven, BN10 8JR
01273 586622

To see more details on this & all our homes go to
www.phillipmann.com

